



Desso & Ex

unity through connection
Desso and Ex Interiors

the collection



Inspiration
—Charles Freger

indigo

indigo



collaboration

Designing with the Desso&Ex collection

left to right
Odette Ex, Jos Nederkoorn,
Suzan Jorritsma,
Bernd van der Stouw,
Marloes Jongen



Connecting the head *and* the heart

A world of colours and patterns that create unity through connection. The collaboration between Odette Ex (Ex Interiors) and Desso resulted in a unique carpet collection that is more than the sum of the contributions of the two partners. The layered design approach of Desso&Ex generates endless combination possibilities.

Desso continuously innovates in the realms of creativity, functionality and Cradle to Cradle®. One of Desso's brand assets is design excellence. Desso's in-house design teams regularly seek inspiration by working with leading designers, including Petra Blaisse, Hella Jongerius, Mark Mulders and Victor & Rolf. A long-standing collaboration with Odette Ex recently turned into a unique process of co-creation between Desso and Ex Interiors. With a shared focus on quality and creativity, the people at Desso and Ex Interiors inspired and surprised each other while developing the Desso&Ex collection. The result is a carpet collection that in all its diversity creates unity through connection.

After successful cooperation with Odette Ex on projects for TNT, Achmea and De Melkfabriek (Dudok Wonen), it was evident that her layered design approach to carpeting would lend itself well to a carpet collection for multiple market segments. A process of co-creation and inspiration, knowledge sharing, feedback and reflection started between the two design teams.

The Desso&Ex collection is a connecting force in working and living spaces too. The collection consists of three variations of grey carpet that can be covered with a high number of patterns in five different colour groups. With this wide freedom of choice, the Desso&Ex carpet collection can bring the desired atmosphere to every space. Simple and soothing in corridors and general areas, more vibrant and exuberant in meeting areas.

Desso&Ex is especially suited to particularizing and personalizing special areas in a room. Working stations, furniture groups or designated zones can be highlighted with combinations of patterns and colours on the floor. Echoing patterns or repeating colours can provide for connections with surrounding spaces.

Designing with the Desso&Ex collection is like painting on a canvas, with the patterns and colours forming the artist's palette. This collection spurs creativity and inspires designers to approach the interior like a work of art.

Desso&Ex is a carpet collection that can define the atmosphere of any space. Either delicate and calm or expressive and intense. With state-of-the-art performance, Desso&Ex connects the head and the heart to create unity.

connection is like *painting* on a canvas



collaboration

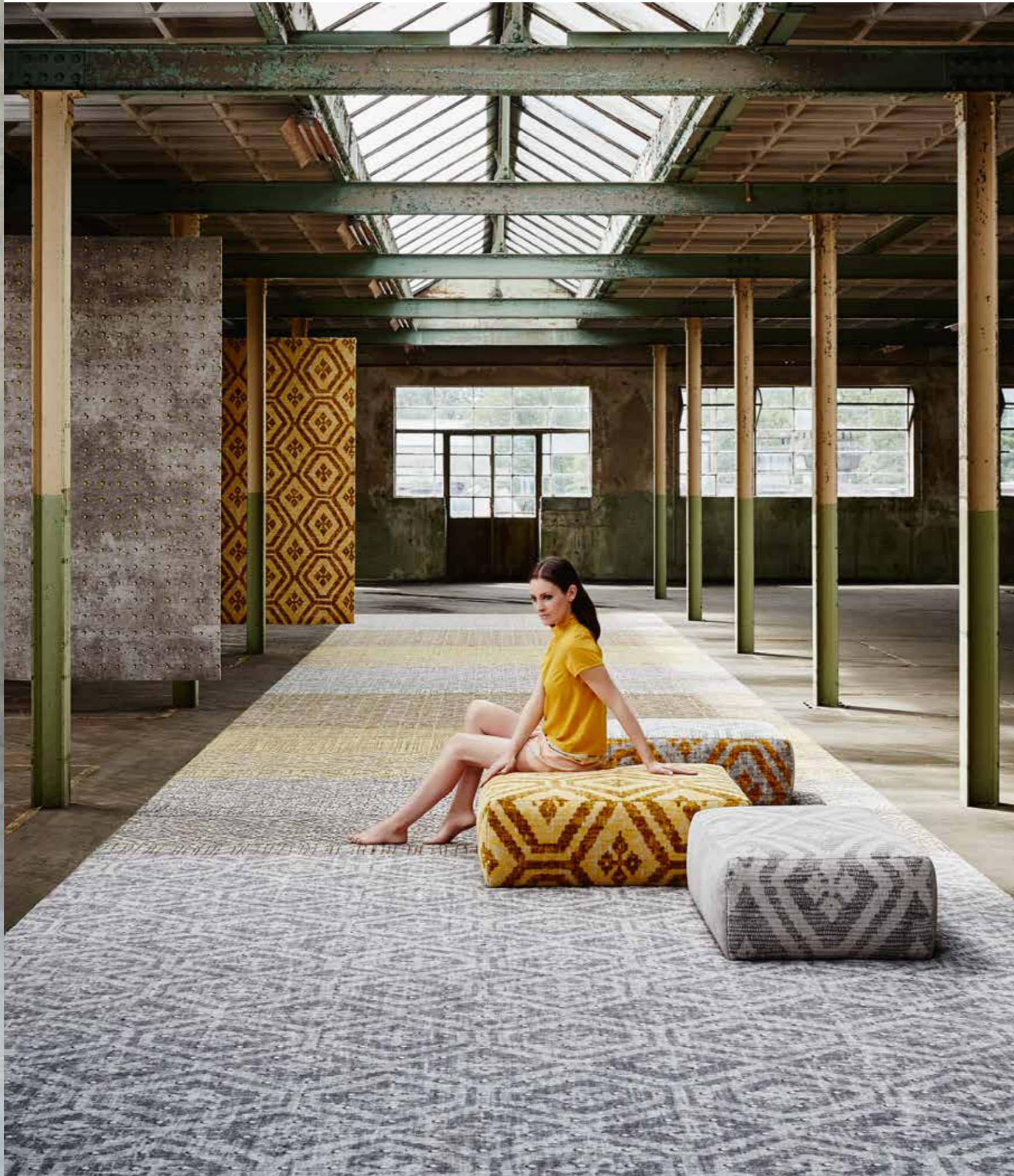
Odette Ex and
Ludwig Cammaert



amber

Inspiration
— Daniel Costa





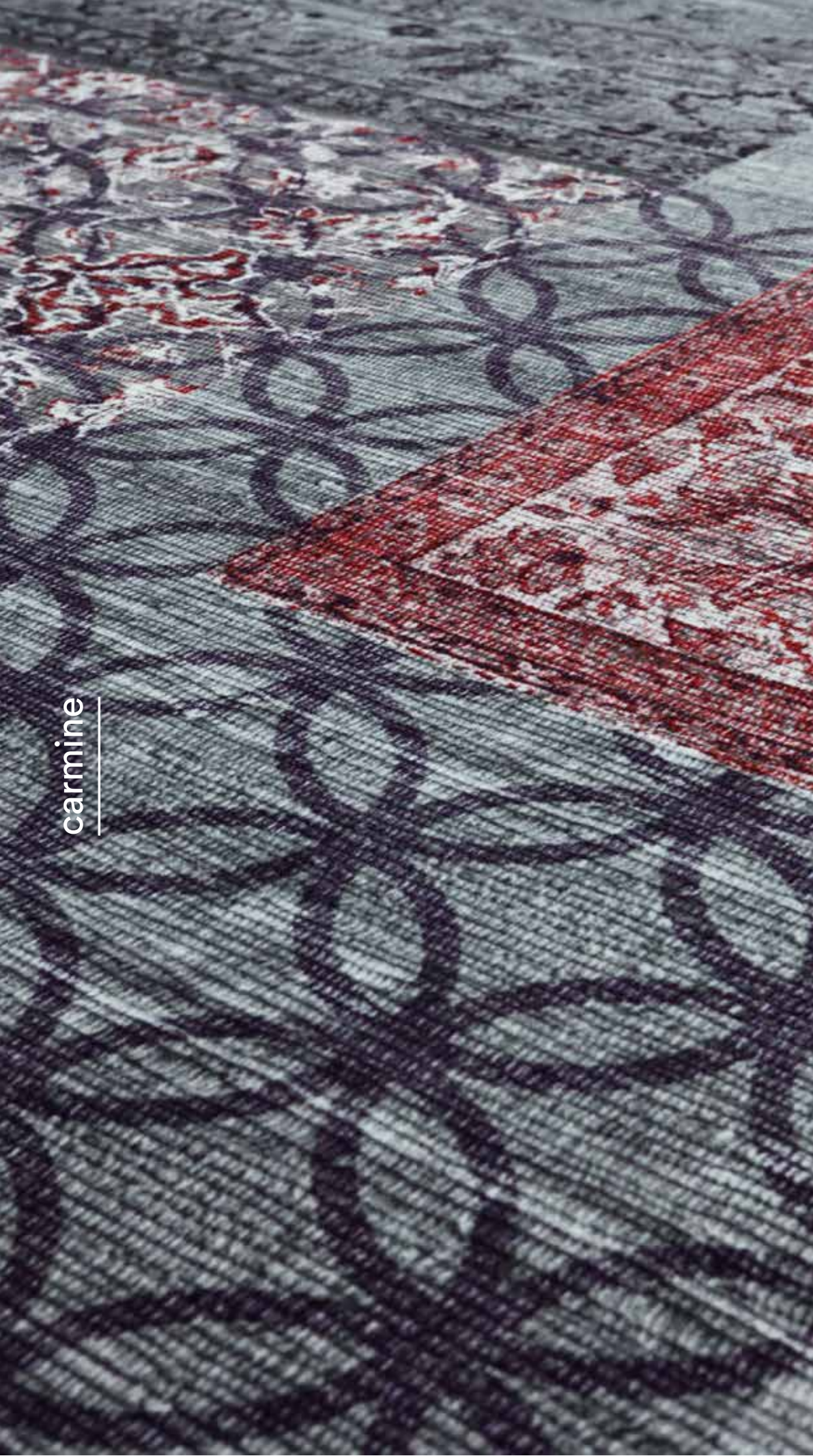
amber

carmine



Inspiration
— Charles Fieger

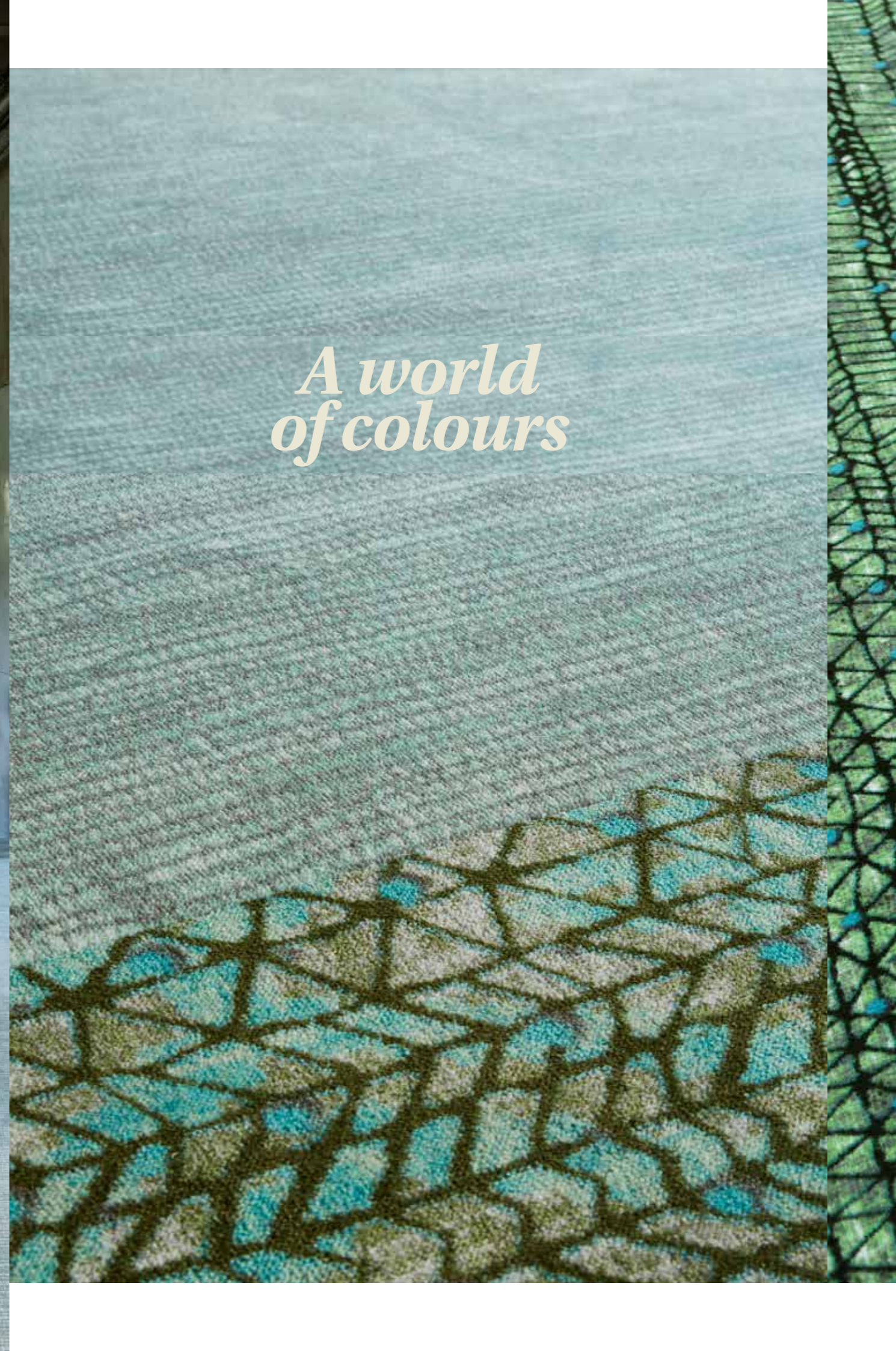
carmine



leaf



*A world
of colours*



and
patterns



leaf

Inspiration
— Phyllis Galembo

Connecting spaces



At De Melkfabriek in Hilversum, a former dairy farm transformed into a residential and office complex, Ex Interiors designed the offices for the housing association Dudok Wonen, in which the central atrium was converted into an inviting open workspace. Consisting of work stations and informal break-out areas, the office space is situated in the middle of a semi-public atrium. Surrounding the central area are quiet zones, meeting rooms and offices.

The challenge for Ex Interiors was to combine the two functions of working and meeting in one space, enabling flexibility. The office acoustics was therefore a crucial consideration, especially for such a large space.

Desso provided the carpet, which was not only instrumental in connecting the various spaces and floors within the building, but also in setting out separate areas into playful and bright environments. Innovative design was at the heart of this Desso and Ex Interiors collaboration at De Melkfabriek.

stone



Inspiration
— Marianne Majerus



stone

composition

B967 9512-32

B967 9512-30

B967 9512-33

B967 4311-16

B967 4311-15

Photography

Alexander van Berge

Styling

Bregje Nix

Credits photography

p3 Charles Freger, p11 Daniel Costa, p14 Charles Freger,
p21 Phyllis Galembo, p25 Marianne Majerus

Design

Dietwee – brand, design and communication

Thanks

Gervasoni, Moroso, Dirk van der Kooij, Pastoe, &Tradition,
Jeroen Wand, Vitra, Ontwerplabel 5, Nimbus-lighting
via Arpalight, Jacco Maris, Lensvelt, Zeitraum

Ex Interiors BV

Wiersedreef 1
3433 ZX Nieuwegein
t +31 30 236 81 62
ex@ex-interiors.nl
www.ex-interiors.nl

Desso BV

Taxandriaweg 15
5142 PA Waalwijk
The Netherlands
t +31 416 68 41 00
f +31 416 33 59 55
www.desso.com

 www.facebook.com/dessothefloorisyours

 www.twitter.com/DessoGroup

 www.pinterest.com/dessogroup

 www.youtube.com/user/DessoGroup

 www.linkedin.com/company/desso

 www.instagram.com/dessogroup

Descriptions, colours and specifications are subject to change without notice. Desso is not responsible for typographical/photographical errors. Actual product may differ from illustration. All rights reserved. Reproduction in whole or in part is prohibited without the prior written consent of the copyright owner. The information presented in this document does not form part of any quotation or contract, is believed to be accurate and reliable and may be changed without notice. No liability will be accepted by the publisher for any consequence of its use. Publication thereof does not convey nor imply any license under patent- or other industrial or intellectual property rights. In case of doubt or differences of interpretation, the English version shall prevail over all other language versions. © 2015 DESSO®.



the collection



THE ULTIMATE
FLOORING EXPERIENCE

A Tarkett Company

EX
INTERIORS